



# Installation instructions for LVT/SPC & WPC

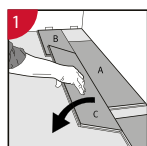
Scan here for 5G Installation instructions



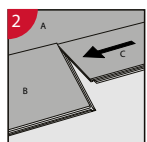
## Important information

- If material has been stored below 40 ° F or above 100 ° F 12 hours prior, then the flooring must be acclimated in the room for a minimum of 12 to 24 hours prior to installation.
- In rooms larger than 20 x 20 m (400 m<sup>2</sup>), the flooring must be installed in smaller sections with expansion joints
- The distance to walls and other permanent pieces of construction elements (such as pillars and kitchen islands) should be approximately 5 mm
- Never install very heavy pieces of furniture such as kitchen islands/cabinets on top of the flooring
- The indoor climate should have a temperature between 55-85 ° F and relative air humidity between 30-60% (according to Swedish Standards Institute).
- Always follow the floor manufacturers requirements and specifications regarding subfloor preparation.

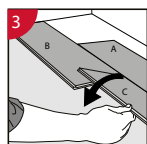
## General installation instructions



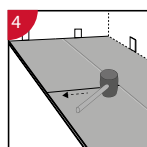
**1** First row  
Place panel (A) as support for long side alignment of panel (B) and (C) while you install panel (B) and panel (C). After that the complete first row is installed, remove panel (A).



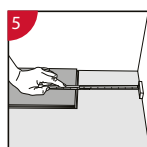
**2** Second panel, first row  
Place this panel (C) gently close to the short end of the first one (B).



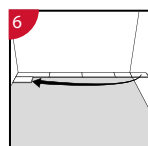
**3** Fold the panel down in a single movement. During the fold down, make sure the panels are close to each other.



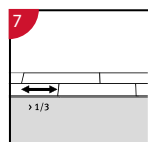
**4** Afterwards use a rubber hammer along the short end just installed, hammering from the inside out.



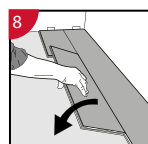
**5** At the end of the first row, put a spacer to the wall and measure the length of the last panel to fit.



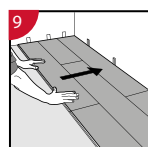
**6** Second row  
First panel min length 400 mm. Put a spacer against the left wall.



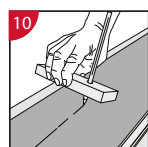
**7** Staggered joint distance i.e. minimum distance between short ends of planks in parallel rows shall not be less than the given length.



**8** Second plank second row  
Place the panel gently and close to the short end of the previous panel and fold it down in a single action movement.

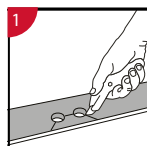


**9** After 2-3 rows  
Adjust the distance to the front wall by placing spacers.

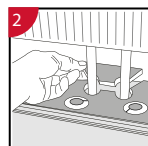


**10** Last row (and perhaps also first row).  
Minimum width 50 mm. Place a spacer to the wall before measuring. Make a simple drawing tool (piece of wood with a hole) and mark the panel along the wall. Cut the panels lengthwise.

## Installation around radiator/heating pipes



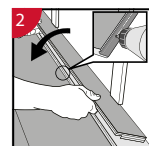
**1** Drill holes two times larger than the diameter of the pipes. Remove a piece of the panel with a utility knife. Put the panel on one side of the pipes and the removed piece on the other side.



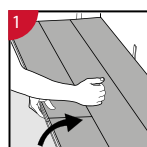
## When angling is not possible



**1** Remove the vertical locking part of the strip with a chisel, put applicable glue on the strip and push the panels horizontally together. Place some spacers between last board and the wall.

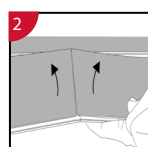


## Dismantling panels



**1** Separate the whole row by carefully lifting up and release the whole row.

**2** Fold up the row and release the whole long side.



**2** Disassemble the panels by lifting the short ends upwards.

Never fold up a panel, as this damage the profile.